

MAXIMUM EXPOSURE, DEVELOPED TO HAVE A LOW ENVIRONMENTAL FOOTPRINT



TITAN 2

is the result of Arneg Nordics own product development for the Nordic market. A design that takes full consideration of the latest market trends. This versatile plug-in cabinet highlights the products through minimalistic design, a smart use of transparency and LED-lighting. Titan 2 creates a noticeable sales pressure for your items. This plug-in cabinet reduces negative environmental impact through smart solutions and local vicinity.



arneg

NORDIC





Various beverage labels and prices are visible on the shelves, including brands like "MILK" and "SODA".

Shelves contain bottled drinks, including juices and sodas, with price tags such as 35¢, 39¢, 54¢, 25¢, 75¢, 75¢, 75¢, 69¢, and 69¢.

Shelves contain bottled drinks, including juices and sodas, with price tags such as 35¢, 39¢, 54¢, 25¢, 75¢, 75¢, 75¢, 69¢, and 69¢.

ICE DISPENSER
25¢
Pepsi
Pepsi
Pepsi

0.34

TITAN 2

arneg
NORDIC



TITAN 2 is extremely silent in operation and uses R290 natural gas for lower environmental impact and sustainability. The cabinet is highly sufficient and uses less energy than many predecessors.

TITAN 2 is ideal for a wide range of product categories, only your imagination can set the limits. It exposes a large volume of products with a small footprint on the floor.



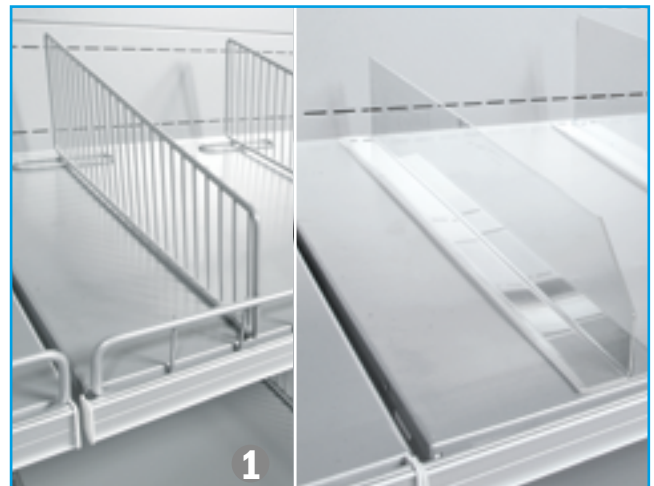
TITAN 2

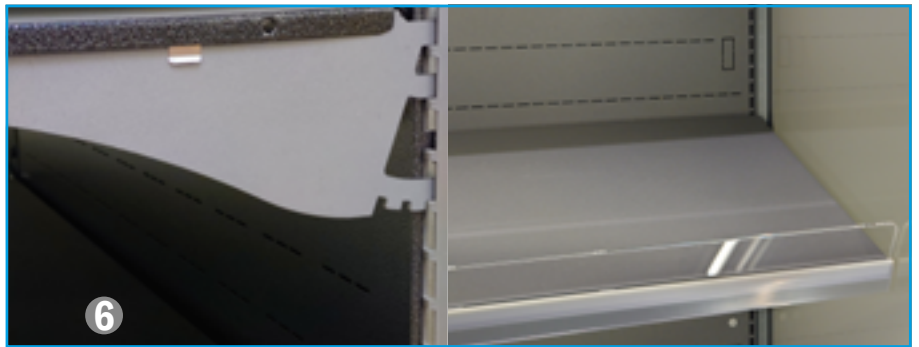
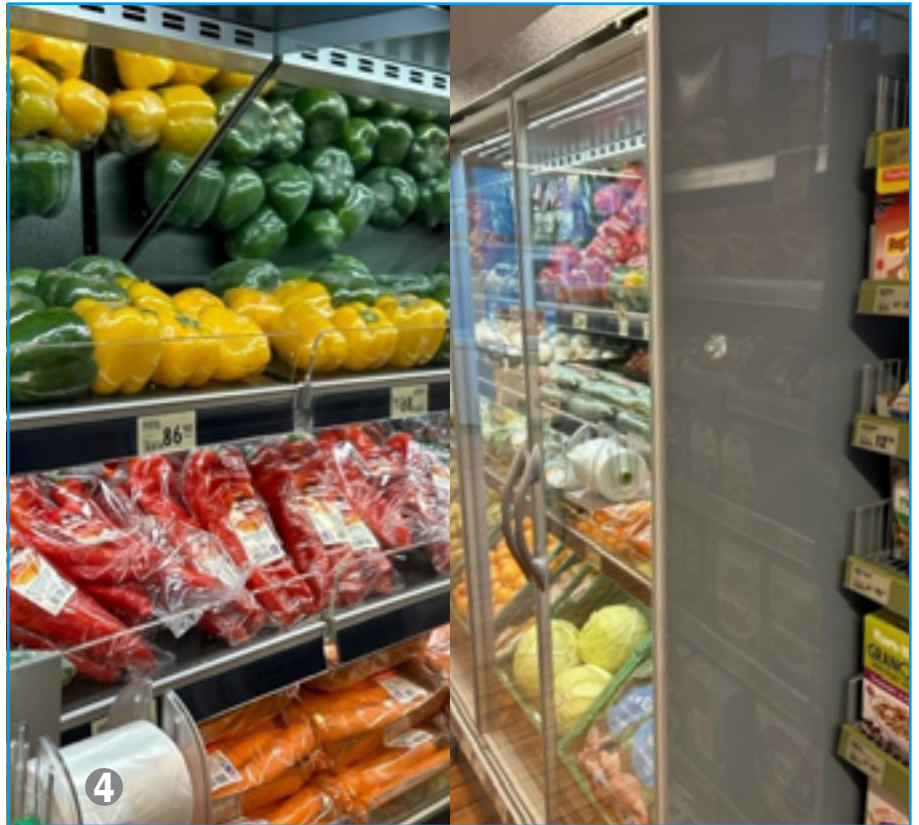


Accessories and options:

- 1 Wire- and Plexi dividers
- 2 S/S High gloss interior
- 3 Glass endwall, grey screening
- 4 Mirror end wall, available as black or gray outside screening. Mirror is optional.
- 5 Adjustable Base grid
- 6 Different options of RAL colors are available for the interior, the shelves has an adjustable angle
- 7 Glass endwall, black screening
- 8 Rear kick plinth
- 9 When LED are moved from the bottom of the shelf to the price rail the lightning improves.

By owning the R&D process you can demand a minimized energy consumption, slim top and minimize the gap between the door/shelf

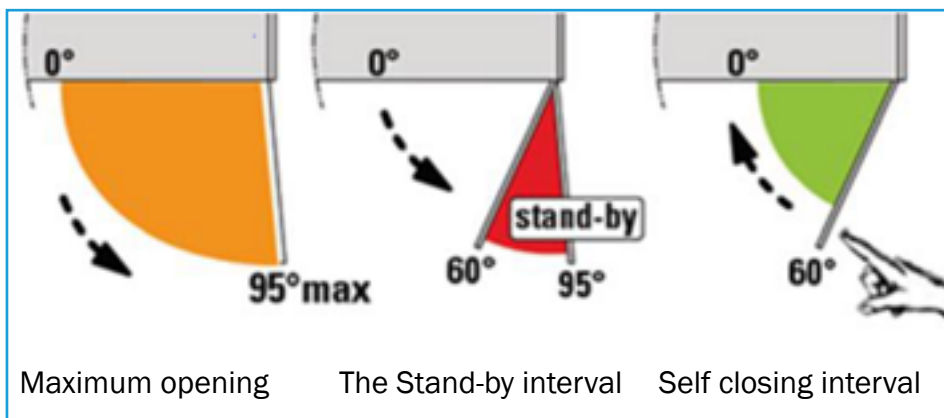




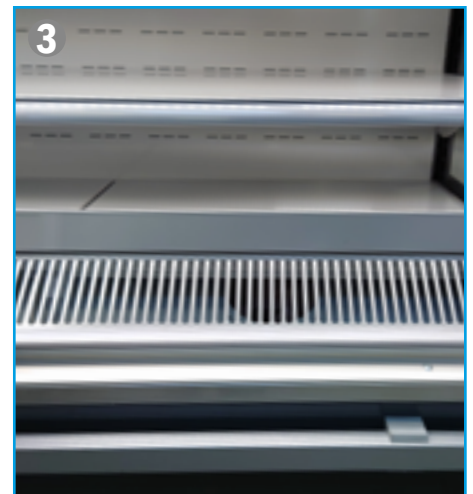
TITAN 2



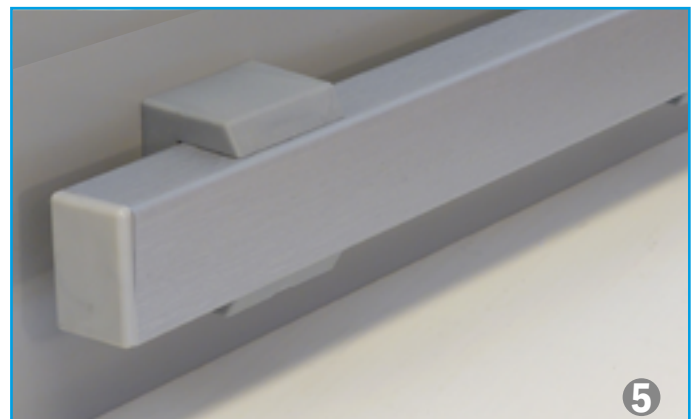
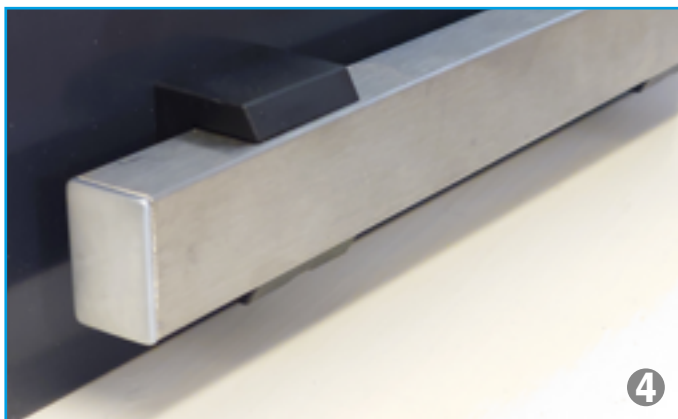
Titan 2 with transparent V23 doors

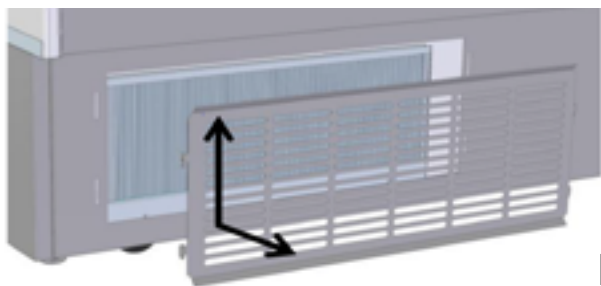


- Accessories and options:
- 1 Wheels & adjustable feet
 - 2 Titan 2 without frontstopp base for price holders
 - 3 Titan 2 with frontstopp base for price holders
 - 4 S/S square bumper
 - 5 Square bumper



Titan 2 with V16 doors

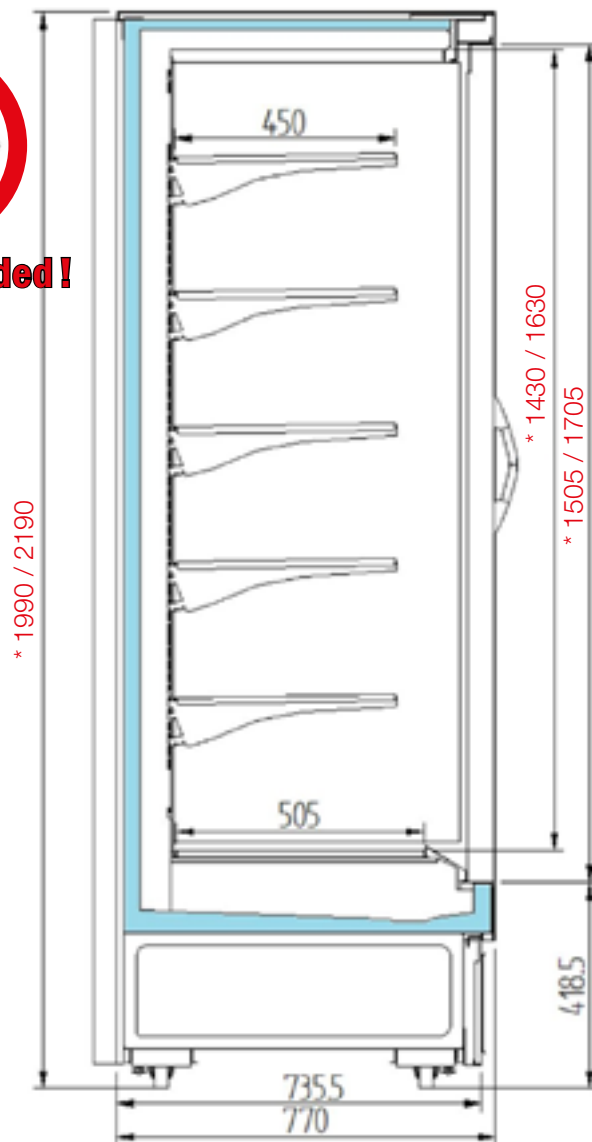




No Tools Needed!

Maintenance is easy. Lift the grille up and out to clean the condenser.

Monthly cleaning contributes to good operating economy and extends a product's lifespan - a climate benefit for all of us!



Information related to energy class (Ecodesign Regulation 2019/2024 and Energy Labelling Regulation 2019/2018) refers to specific product configurations. All configurations other than that presented in the website could require significantly different energy class information. For further details, either consult the European Product Database for Energy Labelling (EPREL) or contact our sales office.

* Value before/after provide the height for H200/H220.

TITAN 2		90	130	200	260
		H200 H220	H200 H220	H200 H220	H200 H220
Längd utan gavlar Length without ends	mm	837	1250	1875	2500
Längd med gavlar Length with ends	mm	877	1290	1915	2540
Höjd Height	mm	1990 2190	1990 2190	1990 2190	1990 2190
Djup Depth	mm	770	770	770	770
Arbetstemperatur Working Temperature	0° / +2° C	•	•	•	•
	+2° / +4° C	•	•	•	•
	+5° / +7° C	•	•	•	•
Energi märkning Energy label					



www.wica.se
info@wica.se

